

LabVIEW driver history for the R&S® SGS100A SGMA Family RF Source

Products:

| R&S® SGS100A



Driver history for LabVIEW

Table of Contents

1	Supported Instruments.....	3
2	Getting Started	4
2.1	LabVIEW version	4
2.2	Installation.....	4
2.3	Additional Help	5
3	LabVIEW driver history.....	6

1 Supported Instruments

In the following table the supported R&S instruments and firmware versions are listed:

Which instruments are supported?		
Current revision of instrument driver supports these instruments and firmware versions:		
Instrument	Supported Firmware	Remarks
SGS100A	3.50.xxx	

2 Getting Started

2.1 LabVIEW version

The Rohde & Schwarz rssgs Instrument driver can be used in **LabVIEW 2010** and later

2.2 Installation

Install the 32-bit driver or 64-bit driver based on your LabVIEW type, **not based on your Windows OS type**.

In order to use the LabVIEW instrument driver after installing, please copy the folder:

32-bit driver:

C:\Program Files (x86)\IVI Foundation\VISA\GWinNT\rssgs

64-bit driver:

C:\Program Files\IVI Foundation\VISA\GWin64\rssgs

into your LabVIEW folder:

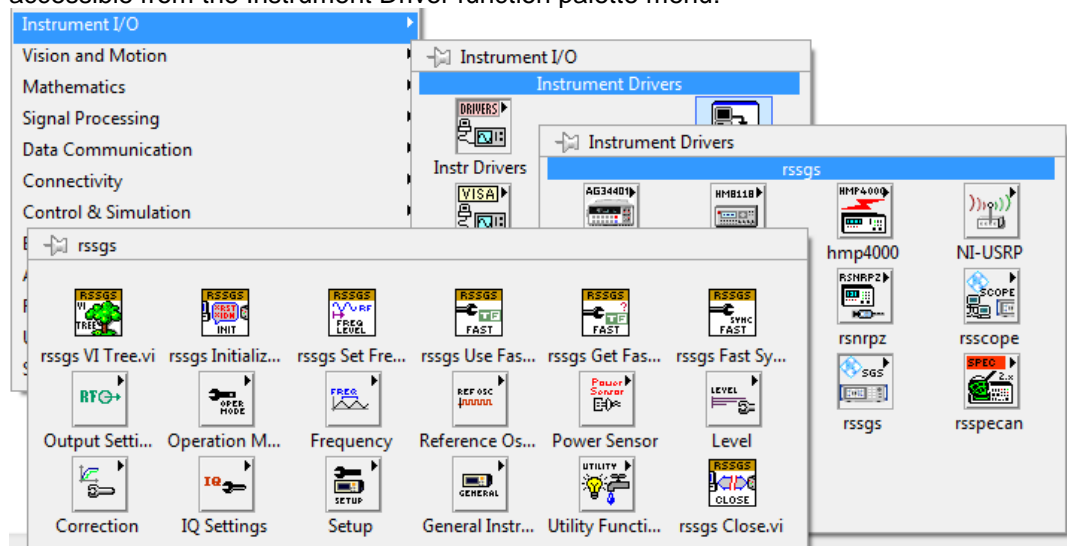
32-bit LabVIEW:

C:\Program Files\National Instruments (x86)\LabVIEW 2010\instr.lib

64-bit LabVIEW:

C:\Program Files\National Instruments\LabVIEW 2010\instr.lib

After restarting your LabVIEW development environment the driver will then be directly accessible from the Instrument Driver function palette menu:



2.3 Additional Help

In addition the instrument driver documentation is included in compressed HTML format (Windows CHM help file **rssgs.chm**) and stored together with the LabVIEW driver sources. Each VIs help is linked to the section in the help file that describes all the features of the VI. A VI help page is opened with the right-click context menu Help item.

3 LabVIEW driver history

rsgs Instrument Driver		
Driver history for LabVIEW		
Revision	Date	Note
1.6.2	09/2016	Driver revision changed to match the CVI driver
1.6.1	09/2016	rsgs Set Frequency Offset.vi rsgs Get Frequency Offset.vi rsgs Set Level Offset.vi rsgs Get Level Offset.vi
1.6.0	04/2016	New : rsgs Configure Power Sensor Display.vi rsgs Configure Power Sensor Zero.vi rsgs Configure Power Sensor Source.vi rsgs Configure Power Sensor.vi rsgs Configure Power Sensor Aperture Time.vi rsgs Configure Power Sensor Sense.vi rsgs Set Initiate Power Measurement.vi rsgs Get Initiate Power Measurement.vi rsgs Set Power Use SParameters.vi rsgs Get Power Use SParameters.vi rsgs Set Power Logging State.vi rsgs Get Power Logging State.vi rsgs Set Power Default Time.vi rsgs Get Power Default Time.vi rsgs Set Power Aperture Time.vi rsgs Get Power Aperture Time.vi rsgs Set Power Frequency.vi rsgs Get Power Frequency.vi rsgs Set Power Offset.vi rsgs Get Power Offset.vi rsgs Set Power Offset State.vi rsgs Get Power Offset State.vi rsgs Set Power Sensor Unit.vi rsgs Get Power Sensor Unit.vi rsgs Set Power Display Permanent State.vi rsgs Get Power Display Permanent State.vi rsgs Set Power Display Permanent Priority.vi rsgs Get Power Display Permanent Priority.vi rsgs Configure Power Filter.vi rsgs Set Power Filter Length.vi

rsgs Instrument Driver		
Driver history for LabVIEW		
Revision	Date	Note
		rsgs Get Power Filter Length.vi rsgs Set Power Filter Mode.vi rsgs Get Power Filter Mode.vi rsgs Set Power Filter Fixed Noise Content.vi rsgs Get Power Filter Fixed Noise Content.vi rsgs Set Power Filter Fixed Noise Timeout.vi rsgs Get Power Filter Fixed Noise Timeout.vi rsgs Get Power Filter Length Auto.vi rsgs Power Filter Search Once.vi rsgs Power Sensor Device.vi rsgs Power Sensor Type.vi rsgs Power Read Power.vi rsgs Power Sensor Version.vi rsgs Power Sensor Serial Number.vi
1.5.0	09/2015	New : rsgs Get Fast Settings.vi rsgs Enumerate Socket Devices.vi
1.3.1	06/2015	*Fixed: - fixed bug in visa abstraction layer
1.3.0	08/2014	New : Correction subsystem rsgs Set Format Status Register Data.vi rsgs Get Format Status Register Data.vi rsgs Set Format Byte Order.vi rsgs Get Format Byte Order.vi
1.2.1	09/2013	New: rsgs Get Level Upper Range.vi rsgs Extension Send.vi rsgs Extension Query.vi rsgs Get Calibration IQ Temperature.vi rsgs Get Calibration Level Temperature.vi rsgs Get CALibration Synthesis Temperature.vi rsgs Set Calibration Extension Only State.vi rsgs Get Calibration Extension Only State.vi rsgs Get SYSTem Operating System.vi rsgs Get SYSTem User Memory Path.vi rsgs Set ROsc Calibration Data Mode.vi rsgs Get ROsc Calibration Data Mode.vi rsgs Network Restart.vi rsgs Set Serial Baud Rate.vi

rsgs Instrument Driver		
Driver history for LabVIEW		
Revision	Date	Note
		rsgs Get Serial Baud Rate.vi rsgs Set Serial Parity.vi rsgs Get Serial Parity.vi rsgs Set Serial StopBits.vi rsgs Get Serial StopBits.vi rsgs Memory Heap Free.vi rsgs MMEMory Catalog Length.vi rsgs MMEMory Directory Catalog Length.vi rsgs MMEMory Load State.vi rsgs MMEMory Store State.vi rsgs Configure PULM.vi rsgs Set PULM Delay.vi rsgs Get PULM Delay.vi rsgs Set PULM Double Delay.vi rsgs Get PULM Double Delay.vi rsgs Set PULM Double Width.vi rsgs Set PULM Double Width.vi rsgs Set PULM Mode.vi rsgs Get PULM Mode.vi rsgs Set PULM Period.vi rsgs Get PULM Period.vi rsgs Set PULM Polarity.vi rsgs Get PULM Polarity.vi rsgs Set PULM Source.vi rsgs Get PULM Source.vi rsgs Set PULM State.vi rsgs Get PULM State.vi rsgs Set PULM Gate Input Polarity.vi rsgs Get PULM Gate Input Polarity.vi rsgs Set PULM External Trigger Input Impedance.vi rsgs Get PULM External Trigger Input Impedance.vi rsgs Set PULM External Trigger Slope.vi rsgs Get PULM External Trigger Slope.vi rsgs Set PULM Trigger Mode.vi rsgs Get PULM Trigger Mode.vi rsgs Set PULM Width.vi rsgs Get PULM Width.vi rsgs SYSTem PCIe Resource.vi Modified: rsgs Set Frequency.vi rsgs Set ROsc External Synchronisation Bandwidth.vi

rssgs Instrument Driver		
Driver history for LabVIEW		
Revision	Date	Note
		rssgs Get ROSC External Synchronisation Bandwidth.vi rssgs Set Level.vi rssgs Get Level.vi rssgs CALibration IQ Modulator.vi rssgs CALibration IQ Modulator For Current Frequency.vi rssgs Set Trigger Connector Operation Mode.vi rssgs Get Trigger Connector Operation Mode.vi Extensions class Deleted: rssgs Set Level Attenuation.vi rssgs Get Level Attenuator Stage.vi rssgs DIAGnostic Module Names.vi rssgs Set Remote Operation Mode.vi rssgs Get Remote Operation Mode.vi rssgs SYSTem Shutdown.vi rssgs Get SYSTem Software Firmware Packages.vi rssgs Get SYSTem Software Firmware Versions.vi rssgs SYSTem Clear Error History.vi rssgs Get SYSTem Data Sheet Catalog.vi rssgs Get SYSTem Data Sheet Parameter.vi rssgs Get SYSTem Data Sheet Version.vi rssgs Get SYSTem Data Sheet Data.vi rssgs Set Velocity Units.vi rssgs Get Velocity Units.vi rssgs Get Baseband Paths.vi rssgs Preset Signal Path.vi
1.2.0	06/2013	New Subsystems: Extension subsystem Modified VIs: rssgs Get RF State.vi - viFastQuerySupported rssgs Get Frequency.vi - viFastQuerySupported rssgs Get Level.vi - viFastQuerySupported rssgs Get IQ Modulator State.vi - viFastQuerySupported rssgs Get IQ Wideband.vi - viFastQuerySupported New VIs: rssgs Set Level ALC Densitivity.vi rssgs Get Level ALC Densitivity.vi rssgs Set Level Attenuation.vi rssgs Get Level Attenuation.vi rssgs Get Level Attenuator Stage.vi
1.1.0	09/2012	Modified VIs:

rsgs Instrument Driver		
Driver history for LabVIEW		
Revision	Date	Note
		<p>All comands in help changed to uniform notation, given by the xsg file</p> <p>rsgs Configure Reference Oscillator.vi - command string in help changed EF10M, OF10M>> 10MHZ</p> <p>rsgs Set ROSC Reference Output Frequency.vi - command string in help changed EF10M >> 10MHZ</p> <p>rsgs Set ROSC External Reference Frequency.vi - command string in help changed OF10M >> 10MHZ</p> <p>rsgs Set Level Mode.vi - command string changed - LNO, LDIS >> LOWN, LOWD</p> <p>rsgs Get Level Mode.vi - command string changed - LNO, LDIS >> LOWN, LOWD</p> <p>rsgs Configure Level Settings.vi - "User" charactersics added, CWSW>>CVSW</p> <p>rsgs Set Level Setting Characteristic.vi - "User" charactersics added, CWSW>>CVSW</p> <p>rsgs Get Level Setting Characteristic.vi - "User" charactersics added, CWSW>>CVSW</p> <p>rsgs Set IQ Modulator State.vi - command changed in help SOUR:MOD:STAT >> SOUR:IQ:STAT</p> <p>rsgs Get IQ Modulator State.vi - command changed in help SOUR:MOD:STAT >> SOUR:IQ:STAT</p> <p>rsgs Set IQ Wideband.vi - command changed in help [:SOURce:]IQ:IMP:IQWB >> SOUR:IQ:WBST</p> <p>rsgs Get IQ Wideband.vi - command changed in help [:SOURce:]IQ:IMP:IQWB >> SOUR:IQ:WBST</p> <p>rsgs Configure IQ.vi - SOUR:MOD:STAT >> SOUR:IQ:STAT, [:SOURce:]IQ:IMP:IQWB >> SOUR:IQ:WBST</p> <p>rsgs Set Frequency.vi - max value changed</p> <p>rsgs Set IQ Wideband.vi - fast command</p> <p>New VIs:</p> <p>rsgs Get Peak Envelope Power.vi</p> <p>rsgs Set IQ Crest Factor.vi</p> <p>rsgs Get IQ Crest Factor.vi</p> <p>rsgs Set SYSTem Eco Mode.vi</p> <p>rsgs Get SYSTem Eco Mode.vi</p> <p>rsgs Set Test Keyboard State.vi</p> <p>rsgs Get Test Keyboard State.vi</p> <p>rsgs Standby.vi</p> <p>rsgs Restart.vi</p> <p>Deleted VIs:</p> <p>Extensions subsystem</p>
1.0.1	10/2011	Fixed boolean controls
1.0.0	08/2011	Initial release

About Rohde & Schwarz

Rohde & Schwarz is an independent group of companies specializing in electronics. It is a leading supplier of solutions in the fields of test and measurement, broadcasting, radiomonitoring and radiolocation, as well as secure communications. Established more than 80 years ago, Rohde & Schwarz has a global presence and a dedicated service network in over 70 countries. Company headquarters are in Munich, Germany.

Environmental commitment

- Energy-efficient products
- Continuous improvement in environmental sustainability
- ISO 14001-certified environmental management system



Regional contact

Europe, Africa, Middle East

+49 89 4129 12345

customersupport@rohde-schwarz.com

North America

1-888-TEST-RSA (1-888-837-8772)

customer.support@rsa.rohde-schwarz.com

Latin America

+1-410-910-7988

customersupport.la@rohde-schwarz.com

Asia/Pacific

+65 65 13 04 88

customersupport.asia@rohde-schwarz.com

R&S® is a registered trademark of Rohde & Schwarz GmbH & Co. KG; Trade names are trademarks of the owners.

Rohde & Schwarz GmbH & Co. KG

Mühl Dorfstraße 15 | D - 81671 München

Phone + 49 89 4129 - 0 | Fax + 49 89 4129 - 13777

www.rohde-schwarz.com