

ROHDE & SCHWARZ

Make ideas real



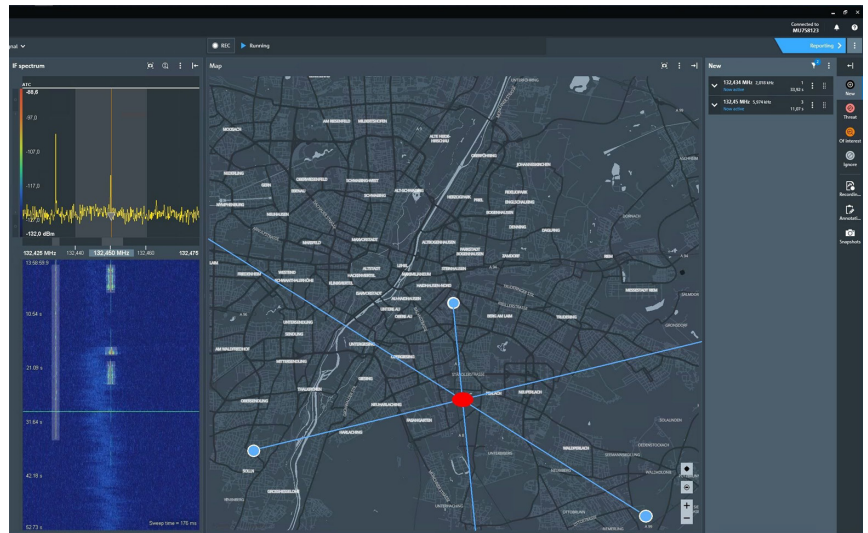
CEPTOR-GEO

Environmentally Rated Monitoring and Direction Finding System

Rohde & Schwarz has been a staple in the U.S. Electromagnetic Spectrum (EMS) community for more than 15 years with EMS solutions. Rohde & Schwarz continues to invest in tools that provide higher degrees of versatility and usability for DoD Spectrum Operators. While deconfliction of the electromagnetic environment (EME) remains an important task, today's tools need to remotely monitor the EME 24/7, provide alerts when rogue signals appear and instantaneously locate signals.

Remote Networked Receivers

R&S®CEPTOR enables a central control station to manage multiple networked receivers. Knowing operational flexibility is key, R&S®CEPTOR enables the operator to assign mission specific assignments to independent receivers. The operator is provided a common visual of all EMS activity within a receiver's area of interest providing instant identification of RF events of interest.



R&S®CEPTOR Geolocation (Mobile/Stationary)

Utilizing R&S®CEPTOR with direction finding receivers and antennas allows the operator to locate possible signals of interest in their AOR. This task can be accomplished either in a mobile or stationary platform. Both use cases can be remoted back to an R&S®CEPTOR control station for monitoring/geolocation. For a more reactive approach, the R&S®CEPTOR software allows for geolocation while on the move with the R&S®CEPTOR Mobile Locate option.

R&S® UMS400

The new R&S® UMS400 is the 4th generation of outdoor monitoring and radiolocation systems from Rohde & Schwarz. This IP67 rated receiver delivers operators with a weatherized network capable receiver with a native frequency range of 8 kHz-8 GHz (expandable to 20 GHz). The R&S® UMS400 frequency range can be expanded up to 20 GHz with the optional R&S® CS-MC20 microwave converter that is easily integrated into the platform.



R&S® UMS400 Compact Monitoring System

This receiver provides high quality monitoring stations with minimal infrastructure requirements. It is equipped with an on-board CPU and can be included into an existing R&S®CEPTOR system solution. A single R&S® UMS400 is direction finding ready and can provide Line-of-Bearing information to a R&S®CEPTOR control station. If the system contains multiple R&S® UMS400's the R&S®CEPTOR system can provide a geolocation from all remote stations.

Due to the compact size and low power consumption, the R&S® UMS400 is perfect as a mobile monitoring station or transportable solution. Along with the receiver's versatility comes increased sensitivity due to embedded RF preselection, providing stronger signal fidelity, increased standoff distance from target, and larger system monitoring and direction finding range.



R&S® CS-MC20 Microwave Converter

R&S® UMS400 Key Facts

- ▶ Frequency range from 20 MHz to 8 GHz (direction finding) and 8 kHz to 8 GHz (monitoring)
- ▶ Frequency expansions available up to 20 GHz (monitoring)
- ▶ 40 GHz/s scan speed
- ▶ High RF performance optimized for use in dense spectrum environments thanks to sub-octave preselection and automatic overload protection
- ▶ Outdoor, autonomous and wireless remote controlled operation
- ▶ Temperature range -30°C to +55°C, IP67

