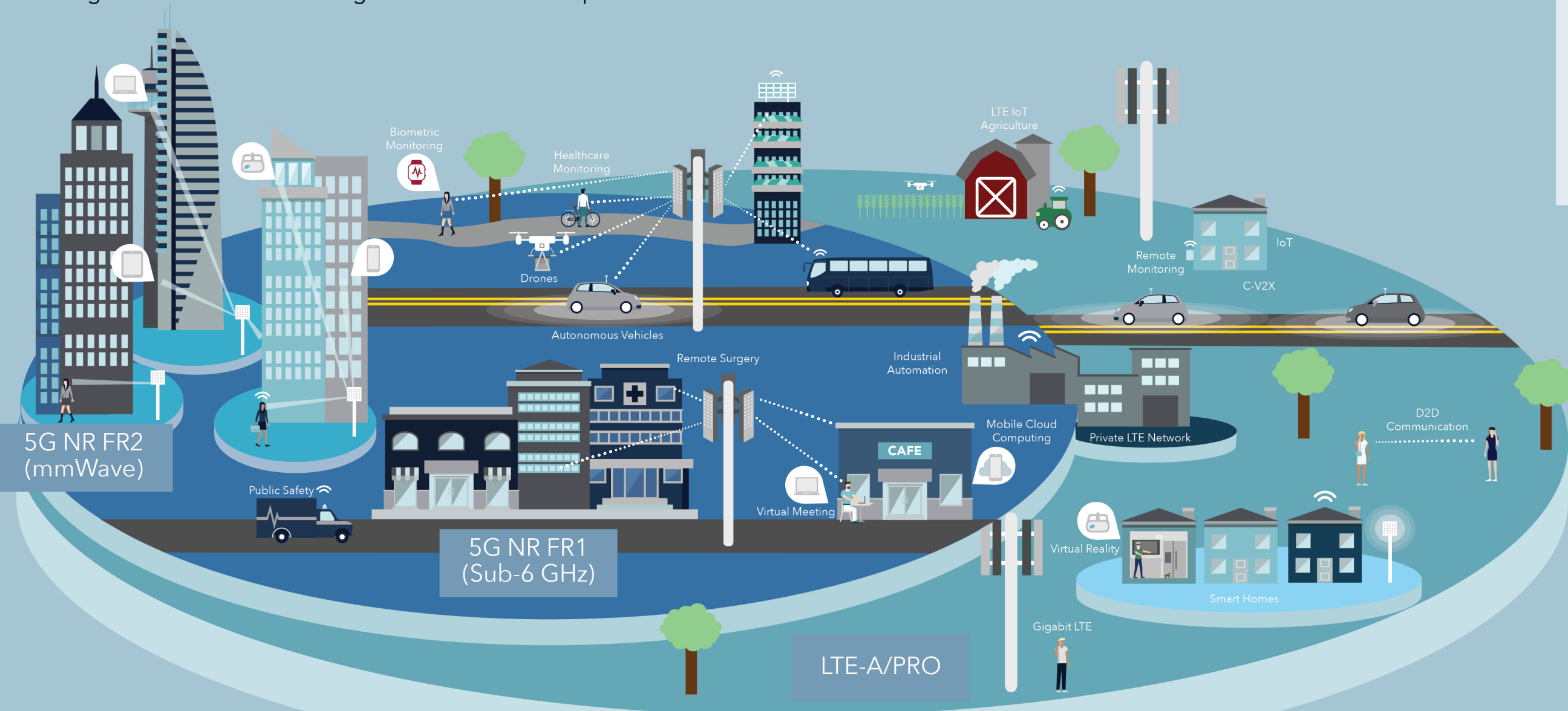


5G and the LTE Evolution

Integration of Access Technologies into a Seamless Experience

Key Enablers:

- Massive MIMO
- Higher Frequencies (mmWave)
- Flexible 5G Waveforms and Multiple Access
- Ultra-dense Networks



Up to 10 Gbps
Data Rate

1 Millisecond
Latency

1,000x More
Bandwidth Per
Unit Area

100x More
Connected
Devices Per Unit
Area Than 4G

10-Year Battery
Life For
Low-Power IoT

90 Percent
Reduction in
Energy Usage



ROHDE & SCHWARZ